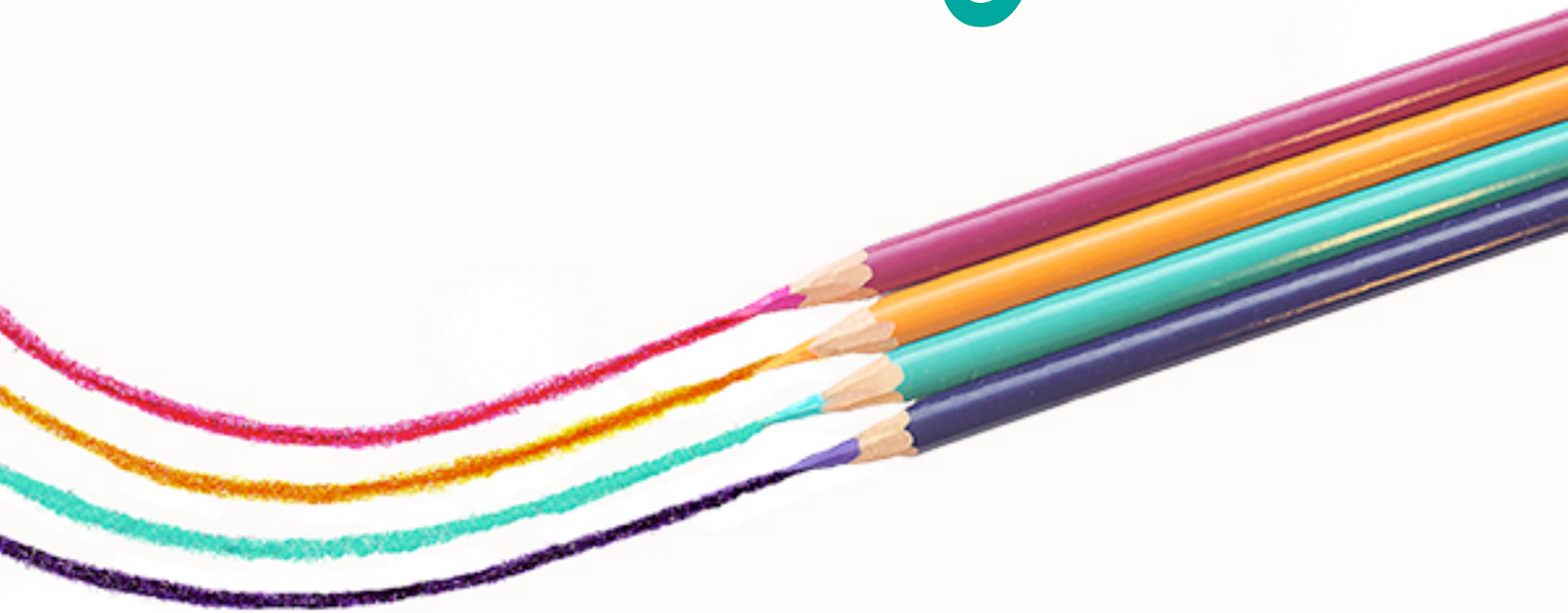




# re:imagine



a missional learning community  
especially for leadership teams  
across the EMBA network

Launch Event (Cohort 2)  
Saturday 19<sup>th</sup> March 2022

Followed by 3 whole day hub gatherings, 6 months apart

## Why?

To enable any leadership team in one of our Baptist Churches to build momentum in the transition towards mission becoming  
**the heart of all they are**  
and no longer  
**simply something they do.**

## Who for?

Any church that's feeling stuck.

**Any church that wants to build momentum towards the future God wants.**

## When?

We gather together for 4 Saturdays spaced roughly 6 months apart, over an 18 month period.

We hope this will give time to embed  
**all God is leading us towards.**

Mike explains...



## Re:imagine?

“You will never see what you cannot imagine. Imagination is more important than knowledge. Imagination is everything” - Albert Einstein.

“Your sons and daughters will prophesy, your old men will dream dreams, your young men will see visions’ - the Prophet Joel, 2:28.

## Community?

Re:imagine is very much a community where people learn most from one another in the context of a shared experience. There is something very special about the dynamic exchange of thinking and practice, which takes place when teams grow in both confidence and vulnerability. No one is better than anyone else - but rather a fellow traveller on a journey, where everyone can learn from others and celebrate what God is going.

## Missional?

For many people this has simply replaced the word ‘mission’. If that is all we do, it’s not akin to moving one deckchair on the Titanic. Missional represents a change of mind and practice. It means that, in order to glorify God, we make our main purpose *being equipped for*, and *engaging in*, the mission of God. This embraces both being and doing and can become the wellspring for our motivation and the direction for our living.

## Learning?

One of the roots of meaning for our word ‘discipleship’ means learning. Unsurprisingly, coming out of the Hebrew mind, we only ‘know’ anything after we’ve done it, or the truth is embraced by real lives. One of the greatest benefits of Re:imagine is helping to translate our *thinking* into practice.

Re:imagine is designed for teams - we think that 6 people is ideal, but we can accommodate teams of different sizes, please speak to us if you have any concerns.

Finally, Re:imagine consists of 4 hubs (one will focus on culture, one of leadership, one on discipleship, and finally, one on mission). In between each hub there is opportunity to meet with someone from the Regional Team, and an opportunity to meet before the next hub. Please see below.



The next Re:imagine cycle begins on Saturday 19<sup>th</sup> March, 2022, the focus of HUB 1 is culture.

HUB 2 (leadership) then takes place on 24<sup>th</sup> September, 2022, HUB 3 (discipleship) takes place on 18<sup>th</sup> March, 2023, and HUB 4 (mission) takes place on 7<sup>th</sup> October 2023.

The total cost for Re:imagine is £80 per person.

If you would be interested in finding out more, please contact the EMBA office or speak to your Regional Minister.